

DOPPIA PARETE ISOLATA LAMA D'ARIA

AIRK NIFE INSULATED DOUBLE - WALL

DOPPIA PARETE ISOLATA LAMA D'ARIA



DOPPIA PARETE ISOLATA LAMA D'ARIA

AIR KNIFE INSULATED *DOUBLE - WALL*

DESCRIZIONE / DESCRIPTION

Camino a doppia parete metallica isolato con lama d'aria di spessore 10 mm, parete interna in acciaio 1.4404 (AISI316L) di spessore 0,5 - 0,6 - 0,8 - 1 mm e parete esterna in acciaio 1.4301 (AISI304) di spessore 0,5 mm, rame, lamiera zincata di spessore 0,5 mm. Range diametri interni: 80 - 300 mm.

Double-wall metal chimney insulated with a 10 mm thick air-knife, internal wall made of steel type 1.4404 (AISI316L), thickness: 0.5 - 0.6 - 0.8 - 1 mm, and external wall made of steel type 1.4301 (AISI304), thickness: 0.5 mm, copper, 0.5 mm thick galvanized sheet metal. Internal diameter range: 80 - 300 mm.

APPLICAZIONI / APPLICATIONS

Evacuazione fumi umidi e secchi in pressione positiva e depressione, prodotti di ventilazione, vapori.

Evacuation of wet and dry smoke under positive and negative pressure, ventilation products, fumes.

DIAMETRI DI PRODUZIONE / DIAMETERS PRODUCED

INTERNO	80	100	130	160	180	200	250	300
----------------	----	-----	-----	-----	-----	-----	-----	-----

ESTERNO	100	120	150	180	200	220	270	320
----------------	-----	-----	-----	-----	-----	-----	-----	-----

CERTIFICAZIONI / CERTIFICATES

Certificato di Conformità del controllo dei processi produttivi in fabbrica.
Compliance certificate for factory production monitoring.



DOPPIA PARETE ISOLATA LAMA D'ARIA

AIR KNIFE INSULATED **DOUBLE - WALL**

DESIGNAZIONE / DESIGNATION

CON GUARNIZIONE / WITH GASKET

Sistema di camino EN 1856-1 / Chimney system EN 1856-1 : T200 – P1 – W – V2 – L50050 – O(50)

EN 1856-1/09	: Normativa di riferimento : Reference standard
T200	: Classe di temperatura (200°C) : Temperature class
P1	: Classe di pressione (200Pa) : Pressure class
W	: Resistenza alla condensa (W : umido - D : secco) : Condensate resistance (W : wet - D : dry)
V2	: Resistenza alla corrosione (Si) : Corrosion resistance
L50	: Specifica del materiale utilizzato (A316L) : Material specification
050	: Spessore del materiale (5/10) : Material thickness
O	: Resistenza al fuoco di fuliggine (G=si - O=no) : Sootfire resistance
(50)	: Distanza dal materiale combustibile (in mm) : Distance to combustible material (in mm)

DOPPIA PARETE ISOLATA LAMA D'ARIA

AIR KNIFE INSULATED *DOUBLE - WALL*



ELEMENTO LINEARE H=1000 ACCIAIO
LINEAR ELEMENT H=1000 STEEL

CODICE	Ø	€
DPAIF001080	80/100	
DPAIF001100	100/120	
DPAIF001130	130/150	
DPAIF001160	160/180	
DPAIF001180	180/200	
DPAIF001200	200/220	
DPAIF001250	250/270	
DPAIF001300	300/320	



ELEMENTO LINEARE H=500 ACCIAIO
LINEAR ELEMENT H=500 STEEL

CODICE	Ø	€
DPAIF003080	80/100	
DPAIF003100	100/120	
DPAIF003130	130/150	
DPAIF003160	160/180	
DPAIF003180	180/200	
DPAIF003200	200/220	
DPAIF003250	250/270	
DPAIF003300	300/320	



ELEMENTO LINEARE H=1000 RAME
LINEAR ELEMENT H=1000 COPPER

CODICE	Ø	€
DPARF001080	80/100	
DPARF001100	100/120	
DPARF001130	130/150	
DPARF001160	160/180	
DPARF001180	180/200	
DPARF001200	200/220	
DPARF001250	250/270	
DPARF001300	300/320	



ELEMENTO LINEARE H=500 RAME
LINEAR ELEMENT H=500 COPPER

CODICE	Ø	€
DPARF003080	80/100	
DPARF003100	100/120	
DPARF003130	130/150	
DPARF003160	160/180	
DPARF003180	180/200	
DPARF003200	200/220	
DPARF003250	250/270	
DPARF003300	300/320	

DOPPIA PARETE ISOLATA LAMA D'ARIA

AIR KNIFE INSULATED *DOUBLE - WALL*



ELEMENTO LINEARE H=250 ACCIAIO
LINEAR ELEMENT H=250 STEEL

CODICE	Ø	€
DPAIF005080	80/100	
DPAIF005100	100/120	
DPAIF005130	130/150	
DPAIF005160	160/180	
DPAIF005180	180/200	
DPAIF005200	200/220	
DPAIF005250	250/270	
DPAIF005300	300/320	



ELEMENTO TELESCOPICO 245/375 ACCIAIO
TELESCOPIC ELEMENT 245/375 STEEL

CODICE	Ø	€
DPAIF007080	80/100	
DPAIF007100	100/120	
DPAIF007130	130/150	
DPAIF007160	160/180	
DPAIF007180	180/200	
DPAIF007200	200/220	
DPAIF007250	250/270	
DPAIF007300	300/320	



ELEMENTO LINEARE H=250 RAME
LINEAR ELEMENT H=250 COPPER

CODICE	Ø	€
DPARF005080	80/100	
DPARF005100	100/120	
DPARF005130	130/150	
DPARF005160	160/180	
DPARF005180	180/200	
DPARF005200	200/220	
DPARF005250	250/270	
DPARF005300	300/320	



ELEMENTO TELESCOPICO 245/375 RAME
TELESCOPIC ELEMENT 245/375 COPPER

CODICE	Ø	€
DPARF007080	80/100	
DPARF007100	100/120	
DPARF007130	130/150	
DPARF007160	160/180	
DPARF007180	180/200	
DPARF007200	200/220	
DPARF007250	250/270	
DPARF007300	300/320	

DOPPIA PARETE ISOLATA LAMA D'ARIA

AIR KNIFE INSULATED *DOUBLE - WALL*



RACCORDO "T" 90° CON STACCO
DOPPIA PARETE ACCIAIO
90° TEE PIECE W/ DOUBLE-WALL BRANCH, STEEL

CODICE	Ø	€
DPAIF011080	80/100	
DPAIF011100	100/120	
DPAIF011130	130/150	
DPAIF011160	160/180	
DPAIF011180	180/200	
DPAIF011200	200/220	
DPAIF011250	250/270	
DPAIF011300	300/320	



RACCORDO "T" 90°
USCITA MONOPARETE ACCIAIO
90° TEE PIECE W/ SINGLE-WALL OUTLET, STEEL

CODICE	Ø	€
DPAIF012080	80/100	
DPAIF012100	100/120	
DPAIF012130	130/150	
DPAIF012160	160/180	
DPAIF012180	180/200	
DPAIF012200	200/220	
DPAIF012250	250/270	
DPAIF012300	300/320	



RACCORDO "T" 90° CON STACCO
DOPPIA PARETE RAME
90° TEE PIECE W/ DOUBLE-WALL BRANCH, COPPER

CODICE	Ø	€
DPARF011080	80/100	
DPARF011100	100/120	
DPARF011130	130/150	
DPARF011160	160/180	
DPARF011180	180/200	
DPARF011200	200/220	
DPARF011250	250/270	
DPARF011300	300/320	



RACCORDO "T" 90°
USCITA MONOPARETE RAME
90° TEE PIECE W/ SINGLE-WALL OUTLET, COPPER

CODICE	Ø	€
DPARF012080	80/100	
DPARF012100	100/120	
DPARF012130	130/150	
DPARF012160	160/180	
DPARF012180	180/200	
DPARF012200	200/220	
DPARF012250	250/270	
DPARF012300	300/320	

DOPPIA PARETE ISOLATA LAMA D'ARIA

AIR KNIFE INSULATED *DOUBLE - WALL*



RACCORDO A "T"
RIDOTTO A 80 ACCIAIO
90° TEE PIECE, REDUCED TO 80, STEEL

CODICE	Ø	€
DPAIF013080	80/100	
DPAIF013100	100/120	
DPAIF013130	130/150	
DPAIF013160	160/180	
DPAIF013180	180/200	
DPAIF013200	200/220	
DPAIF013250	250/270	
DPAIF013300	300/320	



FASCETTA DI CHIUSURA
ACCIAIO
LOCKING BAND, STEEL

CODICE	Ø	€
MPIIF051100	80/100	
MPIIF051120	100/120	
MPIIF051150	130/150	
MPIIF051180	160/180	
MPIIF051200	180/200	
MPIIF051220	200/220	
MPIIF051270	250/270	
MPIIF051320	300/320	



RACCORDO A "T"
RIDOTTO A 80 RAME
90° TEE PIECE, REDUCED TO 80, COPPER

CODICE	Ø	€
DPARF013080	80/100	
DPARF013100	100/120	
DPARF013130	130/150	
DPARF013160	160/180	
DPARF013180	180/200	
DPARF013200	200/220	
DPARF013250	250/270	
DPARF013300	300/320	



FASCETTA DI CHIUSURA
RAME
LOCKING BAND, COPPER

CODICE	Ø	€
MPIRF051100	80/100	
MPIRF051120	100/120	
MPIRF051150	130/150	
MPIRF051180	160/180	
MPIRF051200	180/200	
MPIRF051220	200/220	
MPIRF051270	250/270	
MPIRF051320	300/320	

DOPPIA PARETE ISOLATA LAMA D'ARIA

AIR KNIFE INSULATED *DOUBLE - WALL*

TAPPO CON SCARICO CONDENSA ACCIAIO

CONDENSATE DRAIN CAP STEEL



CODICE	Ø	€
DPAIF035080	80/100	
DPAIF035100	100/120	
DPAIF035130	130/150	
DPAIF035160	160/180	
DPAIF035180	180/200	
DPAIF035200	200/220	
DPAIF035250	250/270	
DPAIF035300	300/320	

TAPPO CIECO ACCIAIO

BLIND CAP STEEL



CODICE	Ø	€
DPAIF036080	80/100	
DPAIF036100	100/120	
DPAIF036130	130/150	
DPAIF036160	160/180	
DPAIF036180	180/200	
DPAIF036200	200/220	
DPAIF036250	250/270	
DPAIF036300	300/320	

TAPPO CON SCARICO CONDENSA RAME

CONDENSATE DRAIN CAP COPPER



CODICE	Ø	€
DPARF035080	80/100	
DPARF035100	100/120	
DPARF035130	130/150	
DPARF035160	160/180	
DPARF035180	180/200	
DPARF035200	200/220	
DPARF035250	250/270	
DPARF035300	300/320	

TAPPO CIECO RAME

BLIND CAP COPPER



CODICE	Ø	€
DPARF036080	80/100	
DPARF036100	100/120	
DPARF036130	130/150	
DPARF036160	160/180	
DPARF036180	180/200	
DPARF036200	200/220	
DPARF036250	250/270	
DPARF036300	300/320	

DOPPIA PARETE ISOLATA LAMA D'ARIA

AIR KNIFE INSULATED *DOUBLE - WALL*



ELEMENTO PRELIEVO FUMI CON TERMOMETRO ACCIAIO

SMOKE SAMPLING ELEMENT W/ THERMOMETER, STEEL

CODICE	Ø	€
DPAIF017080	80/100	
DPAIF017100	100/120	
DPAIF017130	130/150	
DPAIF017160	160/180	
DPAIF017180	180/200	
DPAIF017200	200/220	
DPAIF017250	250/270	
DPAIF017300	300/320	



ELEMENTO DI ISPEZIONE CON TAPPO A TENUTA ACCIAIO

INSPECTION MODULE W/ SEALING PLUG, STEEL

CODICE	Ø	€
DPAIF015080	80/100	
DPAIF015100	100/120	
DPAIF015130	130/150	
DPAIF015160	160/180	
DPAIF015180	180/200	
DPAIF015200	200/220	
DPAIF015250	250/270	
DPAIF015300	300/320	



ELEMENTO PRELIEVO FUMI CON TERMOMETRO RAME

SMOKE SAMPLING ELEMENT W/ THERMOMETER, COPPER

CODICE	Ø	€
DPARF017080	80/100	
DPARF017100	100/120	
DPARF017130	130/150	
DPARF017160	160/180	
DPARF017180	180/200	
DPARF017200	200/220	
DPARF017250	250/270	
DPARF017300	300/320	



ELEMENTO DI ISPEZIONE CON TAPPO A TENUTA RAME

INSPECTION MODULE W/ SEALING PLUG, COPPER

CODICE	Ø	€
DPARF015080	80/100	
DPARF015100	100/120	
DPARF015130	130/150	
DPARF015160	160/180	
DPARF015180	180/200	
DPARF015200	200/220	
DPARF015250	250/270	
DPARF015300	300/320	

DOPPIA PARETE ISOLATA LAMA D'ARIA

AIR KNIFE INSULATED *DOUBLE - WALL*



CURVA A 30° ACCIAIO
30° BEND, STEEL

CODICE	Ø	€
DPAIF021080	80/100	
DPAIF021100	100/120	
DPAIF021130	130/150	
DPAIF021160	160/180	
DPAIF021180	180/200	
DPAIF021200	200/220	
DPAIF021250	250/270	
DPAIF021300	300/320	



CURVA A 45° ACCIAIO
45° BEND, STEEL

CODICE	Ø	€
DPAIF022080	80/100	
DPAIF022100	100/120	
DPAIF022130	130/150	
DPAIF022160	160/180	
DPAIF022180	180/200	
DPAIF022200	200/220	
DPAIF022250	250/270	
DPAIF022300	300/320	



CURVA A 30° RAME
CURVA A 30° RAME

CODICE	Ø	€
DPARF021080	80/100	
DPARF021100	100/120	
DPARF021130	130/150	
DPARF021160	160/180	
DPARF021180	180/200	
DPARF021200	200/220	
DPARF021250	250/270	
DPARF021300	300/320	



CURVA A 45° RAME
45° BEND, COPPER

CODICE	Ø	€
DPARF022080	80/100	
DPARF022100	100/120	
DPARF022130	130/150	
DPARF022160	160/180	
DPARF022180	180/200	
DPARF022200	200/220	
DPARF022250	250/270	
DPARF022300	300/320	

DOPPIA PARETE ISOLATA LAMA D'ARIA

AIR KNIFE INSULATED *DOUBLE - WALL*



CURVA A 90° ACCIAIO
90° BEND, STEEL

CODICE	Ø	€
DPAIF023080	80/100	
DPAIF023100	100/120	
DPAIF023130	130/150	
DPAIF023160	160/180	
DPAIF023180	180/200	
DPAIF023200	200/220	
DPAIF023250	250/270	
DPAIF023300	300/320	



FASCETTA CAVI TIRANTI ACCIAIO
GUY WIRE BRACKET, STEEL

CODICE	Ø	€
DPAIF037080	80/100	
DPAIF037100	100/120	
DPAIF037130	130/150	
DPAIF037160	160/180	
DPAIF037180	180/200	
DPAIF037200	200/220	
DPAIF037250	250/270	
DPAIF037300	300/320	



CURVA A 90° RAME
CURVA A 90° RAME

CODICE	Ø	€
DPARF023080	80/100	
DPARF023100	100/120	
DPARF023130	130/150	
DPARF023160	160/180	
DPARF023180	180/200	
DPARF023200	200/220	
DPARF023250	250/270	
DPARF023300	300/320	



FASCETTA CAVI TIRANTI RAME
GUY WIRE BRACKET, COPPER

CODICE	Ø	€
DPARF037080	80/100	
DPARF037100	100/120	
DPARF037130	130/150	
DPARF037160	160/180	
DPARF037180	180/200	
DPARF037200	200/220	
DPARF037250	250/270	
DPARF037300	300/320	

DOPPIA PARETE ISOLATA LAMA D'ARIA

AIR KNIFE INSULATED *DOUBLE - WALL*



ADATTATORE
MONO/DOPPIA ACCIAIO
SINGLE TO DOUBLE WALL ADAPTER, STEEL

CODICE	Ø	€
DPAIF029080	80/100	
DPAIF029100	100/120	
DPAIF029130	130/150	
DPAIF029160	160/180	
DPAIF029180	180/200	
DPAIF029200	200/220	
DPAIF029250	250/270	
DPAIF029300	300/320	



RACCORDO CALDAIA
ACCIAIO
BOILER ADAPTER, STEEL

CODICE	Ø	€
DPAIF030080	80/100	
DPAIF030100	100/120	
DPAIF030130	130/150	
DPAIF030160	160/180	
DPAIF030180	180/200	
DPAIF030200	200/220	
DPAIF030250	250/270	
DPAIF030300	300/320	



ADATTATORE
MONO/DOPPIA RAME
SINGLE TO DOUBLE WALL ADAPTER, COPPER

CODICE	Ø	€
DPARF029080	80/100	
DPARF029100	100/120	
DPARF029130	130/150	
DPARF029160	160/180	
DPARF029180	180/200	
DPARF029200	200/220	
DPARF029250	250/270	
DPARF029300	300/320	



RACCORDO CALDAIA
RAME
BOILER ADAPTER, COPPER

CODICE	Ø	€
DPARF030080	80/100	
DPARF030100	100/120	
DPARF030130	130/150	
DPARF030160	160/180	
DPARF030180	180/200	
DPARF030200	200/220	
DPARF030250	250/270	
DPARF030300	300/320	

DOPPIA PARETE ISOLATA LAMA D'ARIA

AIR KNIFE INSULATED *DOUBLE - WALL*



ADATTATORE
DOPPIA/MONO ACCIAIO
DOUBLE TO SINGLE WALL ADAPTER, STEEL

CODICE	Ø	€
DPAIF031080	80/100	
DPAIF031100	100/120	
DPAIF031130	130/150	
DPAIF031160	160/180	
DPAIF031180	180/200	
DPAIF031200	200/220	
DPAIF031250	250/270	
DPAIF031300	300/320	



ROSONE PIANO DI FINITURA
ACCIAIO
FLAT FINISHING ROSETTE, STEEL

x DP	CODICE	I Ø E	€
80/100	MPIIF062100	100 200	
100/120	MPIIF062120	120 220	
130/150	MPIIF062150	150 250	
160/180	MPIIF062180	180 280	
180/200	MPIIF062200	200 300	
200/220	MPIIF062220	220 320	



ADATTATORE
DOPPIA/MONO RAME
DOUBLE TO SINGLE WALL ADAPTER, COPPER

CODICE	Ø	€
DPARF031080	80/100	
DPARF031100	100/120	
DPARF031130	130/150	
DPARF031160	160/180	
DPARF031180	180/200	
DPARF031200	200/220	
DPARF031250	250/270	
DPARF031300	300/320	



ROSONE PIANO DI FINITURA
RAME
FLAT FINISHING ROSETTE, COPPER

x DP	CODICE	I Ø E	€
80/100	MPIRF062100	100 200	
100/120	MPIRF062120	120 220	
130/150	MPIRF062150	150 250	
160/180	MPIRF062180	180 280	
180/200	MPIRF062200	200 300	
200/220	MPIRF062220	220 320	

DOPPIA PARETE ISOLATA LAMA D'ARIA

AIR KNIFE INSULATED *DOUBLE - WALL*



PIASTRA CON ELEMENTO
ACCIAIO

PLATE W/ ELEMENT, STEEL

CODICE	Ø	€
DPAIF025080	80/100	
DPAIF025100	100/120	
DPAIF025130	130/150	
DPAIF025160	160/180	
DPAIF025180	180/200	
DPAIF025200	200/220	
DPAIF025250	250/270	
DPAIF025300	300/320	



BASE A TERRA
CON SCARICO ACCIAIO

FLOOR BASE W/ DRAIN, STEEL

CODICE	Ø	€
DPAIF027080	80/100	
DPAIF027100	100/120	
DPAIF027130	130/150	
DPAIF027160	160/180	
DPAIF027180	180/200	
DPAIF027200	200/220	
DPAIF027250	250/270	
DPAIF027300	300/320	



PIASTRA CON ELEMENTO
RAME

PLATE W/ ELEMENT, COPPER

CODICE	Ø	€
DPARF025080	80/100	
DPARF025100	100/120	
DPARF025130	130/150	
DPARF025160	160/180	
DPARF025180	180/200	
DPARF025200	200/220	
DPARF025250	250/270	
DPARF025300	300/320	



BASE A TERRA
CON SCARICO RAME

FLOOR BASE W/ DRAIN, COPPER

CODICE	Ø	€
DPARF027080	80/100	
DPARF027100	100/120	
DPARF027130	130/150	
DPARF027160	160/180	
DPARF027180	180/200	
DPARF027200	200/220	
DPARF027250	250/270	
DPARF027300	300/320	

DOPPIA PARETE ISOLATA LAMA D'ARIA

AIR KNIFE INSULATED *DOUBLE - WALL*



COPPIA DI ALETTE
PER PIASTRA ACCIAIO
PAIR OF TABS FOR PLATE, STEEL

CODICE	Ø	€
DPAIF026080	80/100	
DPAIF026100	100/120	
DPAIF026130	130/150	
DPAIF026160	160/180	
DPAIF026180	180/200	
DPAIF026200	200/220	
DPAIF026250	250/270	
DPAIF026300	300/320	



GUARNIZIONE IN SILICONE
(MAX 200°C)
SILICONE GASKET (MAX 200 °C)

CODICE	Ø	€
MPIIF053080	80	
MPIIF053100	100	
MPIIF053130	130	
MPIIF053160	160	
MPIIF053180	180	
MPIIF053200	200	
MPIIF053250	250	
MPIIF053300	300	



COPPIA DI ALETTE
PER PIASTRA RAME
PAIR OF TABS FOR PLATE, COPPER

CODICE	Ø	€
DPARF026080	80/100	
DPARF026100	100/120	
DPARF026130	130/150	
DPARF026160	160/180	
DPARF026180	180/200	
DPARF026200	200/220	
DPARF026250	250/270	
DPARF026300	300/320	



> NEW
GUARNIZIONE EPDM 5000 Pa
PER CONDENSAZIONE (MAX 120°C)
EPDM GASKET 5000 Pa FOR CONDENSATION (MAX 120 °C)

CODICE	Ø	€
MPIIF068080	80	
MPIIF068100	100	
MPIIF068130	130	
MPIIF068160	160	
MPIIF068180	180	
MPIIF068200	200	
MPIIF068250	250	
MPIIF068300	300	

Per l'innesto si consiglia l'uso di scivolante
We recommend using lubricant

DOPPIA PARETE ISOLATA LAMA D'ARIA

AIR KNIFE INSULATED *DOUBLE - WALL*



STAFFA A MURO FISSA
50 MM ACCIAIO

FIXED WALL BRACKET 50 MM STEEL

CODICE	Ø	€
DPAIF047080	80/100	
DPAIF047100	100/120	
DPAIF047130	130/150	
DPAIF047160	160/180	
DPAIF047180	180/200	
DPAIF047200	200/220	
DPAIF047250	250/270	
DPAIF047300	300/320	



STAFFA A MURO REGOLABILE
50/80 MM ACCIAIO

ADJUSTABLE WALL BRACKET 50/80 MM STEEL

CODICE	Ø	€
DPAIF049080	80/100	
DPAIF049100	100/120	
DPAIF049130	130/150	
DPAIF049160	160/180	
DPAIF049180	180/200	
DPAIF049200	200/220	



STAFFA A MURO FISSA
50 MM RAME

FIXED WALL BRACKET 50 MM COPPER

CODICE	Ø	€
DPARF047080	80/100	
DPARF047100	100/120	
DPARF047130	130/150	
DPARF047160	160/180	
DPARF047180	180/200	
DPARF047200	200/220	
DPARF047250	250/270	
DPARF047300	300/320	



STAFFA A MURO REGOLABILE
50/80 MM RAME

ADJUSTABLE WALL BRACKET 50/80 MM COPPER

CODICE	Ø	€
DPARF049080	80/100	
DPARF049100	100/120	
DPARF049130	130/150	
DPARF049160	160/180	
DPARF049180	180/200	
DPARF049200	200/220	

DOPPIA PARETE ISOLATA LAMA D'ARIA

AIR KNIFE INSULATED *DOUBLE - WALL*

> NEW

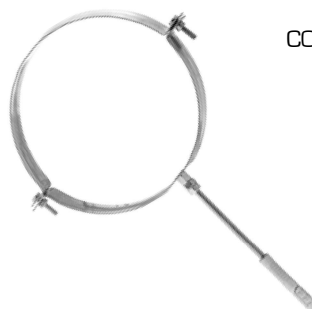


COPPIA PROLUNGHE PER
STAFFA MURALE ACCIAIO
PAIR OF WALL BRACKET EXTENSIONS, STEEL

CODICE	L	€
DPIIF055001	400mm	



CODICE	L	€
DPIIF054001	200mm	



COLLARE DI FISSAGGIO CON TASSELLO
PIPE CLAMP W/ WALL PLUG

CODICE	Ø	€
MPIIF044100	80/100	
MPIIF044120	100/120	
MPIIF044150	130/150	
MPIIF044180	160/180	
MPIIF044200	180/200	
MPIIF044220	200/220	

> NEW



COPPIA PROLUNGHE PER
STAFFA MURALE RAME
PAIR OF WALL BRACKET EXTENSIONS, COPPER

CODICE	L	€
DPIRF055001	400mm	



CODICE	L	€
DPIRF054001	200mm	17,00



COLLARE DI FISSAGGIO CON TASSELLO RAME
PIPE CLAMP W/ WALL PLUG, COPPER

CODICE	Ø	€
MPIRF044100	80/100	
MPIRF044120	100/120	

DOPPIA PARETE ISOLATA LAMA D'ARIA

AIR KNIFE INSULATED *DOUBLE - WALL*



TERMINALE ANTIVENTO
ACCIAIO
WINDPROOF CAP, STEEL

CODICE	Ø	€
DPAIF039080	80/100	
DPAIF039100	100/120	
DPAIF039130	130/150	
DPAIF039160	160/180	
DPAIF039180	180/200	
DPAIF039200	200/220	
DPAIF039250	250/270	
DPAIF039300	300/320	



TERMINALE PARAPIOGGIA
ACCIAIO
RAIN CAP, STEEL

CODICE	Ø	€
DPAIF041080	80/100	
DPAIF041100	100/120	
DPAIF041130	130/150	
DPAIF041160	160/180	
DPAIF041180	180/200	
DPAIF041200	200/220	
DPAIF041250	250/270	
DPAIF041300	300/320	



TERMINALE ANTIVENTO
RAME
WINDPROOF CAP, COPPER

CODICE	Ø	€
DPARF039080	80/100	
DPARF039100	100/120	
DPARF039130	130/150	
DPARF039160	160/180	
DPARF039180	180/200	
DPARF039200	200/220	
DPARF039250	250/270	
DPARF039300	300/320	



TERMINALE PARAPIOGGIA
RAME
RAIN CAP, COPPER

CODICE	Ø	€
DPARF041080	80/100	
DPARF041100	100/120	
DPARF041130	130/150	
DPARF041160	160/180	
DPARF041180	180/200	
DPARF041200	200/220	
DPARF041250	250/270	
DPARF041300	300/320	

DOPPIA PARETE ISOLATA LAMA D'ARIA

AIR KNIFE INSULATED *DOUBLE - WALL*



TERMINALE A ELEMENTI
ACCIAIO

MULTIPLE-ELEMENT CAP, STEEL

CODICE	Ø	€
DPAIF044080	80/100	
DPAIF044100	100/120	
DPAIF044130	130/150	
DPAIF044160	160/180	
DPAIF044180	180/200	
DPAIF044200	200/220	
DPAIF044250	250/270	
DPAIF044300	300/320	



TERMINALE TRONCO DI CONO
ACCIAIO

TRUNCATED CONE CAP, STEEL

CODICE	Ø	€
DPAIF042080	80/100	
DPAIF042100	100/120	
DPAIF042130	130/150	
DPAIF042160	160/180	
DPAIF042180	180/200	
DPAIF042200	200/220	
DPAIF042250	250/270	
DPAIF042300	300/320	



TERMINALE A ELEMENTI
RAME

MULTIPLE-ELEMENT CAP, COPPER

CODICE	Ø	€
DPARF044080	80/100	
DPARF044100	100/120	
DPARF044130	130/150	
DPARF044160	160/180	
DPARF044180	180/200	
DPARF044200	200/220	
DPARF044250	250/270	
DPARF044300	300/320	



TERMINALE TRONCO DI CONO
RAME

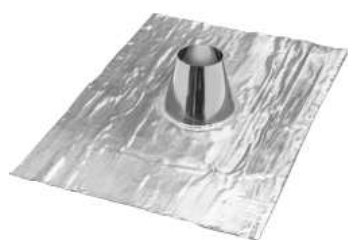
TRUNCATED CONE CAP, COPPER

CODICE	Ø	€
DPARF042080	80/100	
DPARF042100	100/120	
DPARF042130	130/150	
DPARF042160	160/180	
DPARF042180	180/200	
DPARF042200	200/220	
DPARF042250	250/270	
DPARF042300	300/320	

DOPPIA PARETE ISOLATA LAMA D'ARIA

AIR KNIFE INSULATED *DOUBLE - WALL*

FALDALE PIANO INOX
BASE PIOMBO (1000X700)
FLAT FLASHING, SS W/ LEAD BASE (1000x700)



CODICE	Ø	€
DPAIF050080	80/100	
DPAIF050100	100/120	
DPAIF050130	130/150	
DPAIF050160	160/180	
DPAIF050180	180/200	
DPAIF050200	200/220	
DPAIF050250	250/270	
DPAIF050300	300/320	

FALDALE INCLINATO INOX
BASE PIOMBO (1000X700)
SLOPED FLASHING, SS W/ LEAD BASE (1000x700)



CODICE	Ø	€
DPAIF051080	80/100	
DPAIF051100	100/120	
DPAIF051130	130/150	
DPAIF051160	160/180	
DPAIF051180	180/200	
DPAIF051200	200/220	
DPAIF051250	250/270	
DPAIF051300	300/320	

FALDALE PIANO RAME
BASE PIOMBO (1000X700)
FLAT FLASHING, COPPER W/ LEAD BASE (1000x700)



CODICE	Ø	€
DPARF050080	80/100	
DPARF050100	100/120	
DPARF050130	130/150	
DPARF050160	160/180	
DPARF050180	180/200	
DPARF050200	200/220	
DPARF050250	250/270	
DPARF050300	300/320	

FALDALE INCLINATO RAME
BASE PIOMBO (1000X700)
SLOPED FLASHING, COPPER W/ LEAD BASE



CODICE	Ø	€
DPARF051080	80/100	
DPARF051100	100/120	
DPARF051130	130/150	
DPARF051160	160/180	
DPARF051180	180/200	
DPARF051200	200/220	
DPARF051250	250/270	
DPARF051300	300/320	

DOPPIA PARETE ISOLATA LAMA D'ARIA

AIR KNIFE INSULATED *DOUBLE - WALL*



SCOSSALINA PER FALDALE ACCIAIO

STORM COLLAR FOR FLASHING, STEEL

CODICE	Ø	€
DPAIF055080	80/100	
DPAIF055100	100/120	
DPAIF055130	130/150	
DPAIF055160	160/180	
DPAIF055180	180/200	
DPAIF055200	200/220	
DPAIF055250	250/270	
DPAIF055300	300/320	



SCOSSALINA PER FALDALE RAME

STORM COLLAR FOR FLASHING, COPPER

CODICE	Ø	€
DPARF055080	80/100	
DPARF055100	100/120	
DPARF055130	130/150	
DPARF055160	160/180	
DPARF055180	180/200	
DPARF055200	200/220	
DPARF055250	250/270	
DPARF055300	300/320	